



Brassey Close, Chipping Norton

£1,800 pcm

Three Bedroom Home

Description

The property briefly comprises; Entrance Hall, Cloakroom, Kitchen, Living Room, Master Bedroom with En-suite Shower Room, Two Further Bedrooms, Family Bathroom, Study Room, Rear Garden with Patio, Garage, Gas Central Heating, Double Glazed Windows.

Council Tax Band: D (West Oxfordshire District Council)

Deposit: £2,075

Holding Deposit: £415



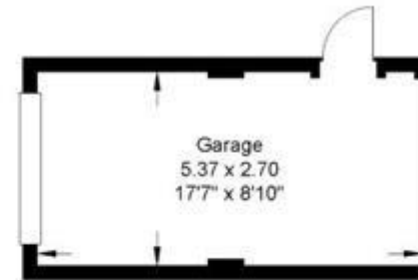


Approximate Gross Internal Area= 105.42 sq m / 1134.73 sq ft
(Excluding Garage)

Garage= 14.50 sq m / 156.07 sq ft

Total= 119.92 sq m / 1290.80 sq ft

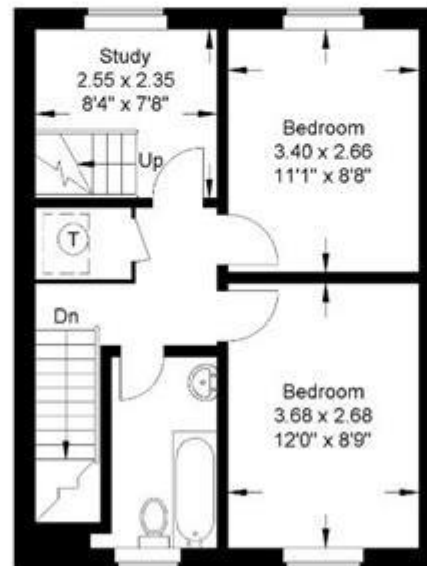
Illustration for identification purposes only,
measurements are approximate, not to scale.



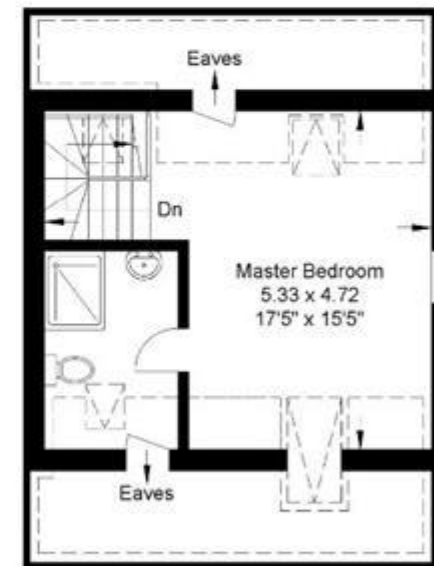
Garage



Ground Floor



First Floor



Second Floor



Energy Efficiency Rating		
	Current	Potential
Very energy efficient - lower running costs (92-100) A		
(81-91) B		
(69-80) C		75
(55-68) D	62	
(39-54) E		
(21-38) F		
(1-20) G		

Viewing by appointment only
 Mark David - Deddington Office
 Market House, Market Place, Deddington, Oxfordshire OX15 0SB
 Tel: 01869 338898 Email: deddington@mark-david.co.uk Website: <http://www.mark-david.co.uk>