



Great Bourton,
Oxfordshire

Great Bourton, Oxfordshire

A Deceptively Spacious Three Bedroom Character Cottage with an Abundance of Charm, Original Features, and a Car Parking Space.

Great Bourton is conveniently located to Banbury and close enough to the countryside for walks and cycling along the many bridleways and footpaths. The M40 motorway is approximately 3 miles away, making it just a short journey to the main link between Birmingham and London. The closest primary school to Great Bourton can be found in Cropredy, but a bus service is run to take the children from the village to the school and back. There are local GP facilities also in the village of Cropredy or in the town of Banbury.



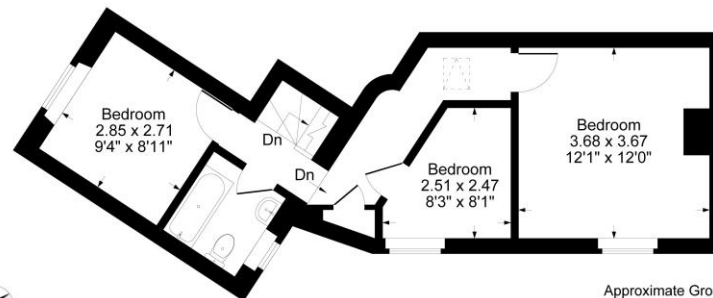


The Property Briefly Comprises Of:

- Kitchen/Dining Room
- Sitting Room
- Three Bedrooms
- Bathroom
- Garden
- Driveway

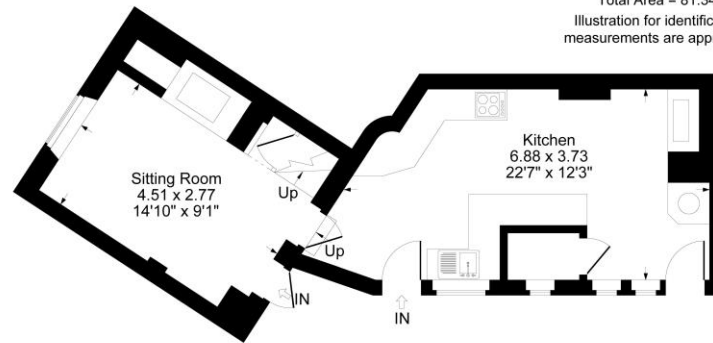


Guide Price: £325,000



First Floor

Approximate Gross Internal Area
 Ground Floor = 42.24 sq m / 455 sq ft
 First Floor = 39.10 sq m / 421 sq ft
 Total Area = 81.34 sq m / 876 sq ft
 Illustration for identification purposes only,
 measurements are approximate, not to scale.



Ground Floor

Local Authority
 Oxfordshire County Council

Council Tax Band: E
 (Subject to change after
 completion)

Tenure

Freehold

Distances

Banbury c. 3 miles
 Chipping Norton c. 16 miles
 Bicester c. 19 miles
 Oxford c. 31 miles
 Birmingham c. 53 miles
 London c. 79 miles
 M40 Access c. 3 miles
 London via Bicester c. 43 minutes

Mark David
 ESTATE AGENTS
 Sales • Lettings • Management

Market House, Market Place, Deddington, Oxfordshire
 OX15 0SB
 Tel: 01869 338898
 Email: deddington@mark-david.co.uk
www.mark-david.co.uk

Important Notice

Mark David Estate Agents for themselves and their clients give notice that:-

1. They are not authorised to make or give representation or warranty in relation to this property, either on their own behalf or on behalf of the Seller. They assume no responsibility for any statement made in these particulars. These particulars do not form part of any offer or contract and must not be relied upon as statements or representations of fact.
2. Whilst every attempt has been made to ensure the accuracy of the floorplan contained here, measurements of doors, windows, rooms and any other items are approximate and no responsibility is taken for any error, omission, or mis-statement.
3. All areas, measurements or distances are approximate. The particulars are intended for guidance only and are not necessarily comprehensive. A wide angle lens may have been used in photography. Mark David Estate Agents have not tested appliances or services and it should not be assumed that the property has all necessary planning, building regulation and other consents. Buyers must satisfy themselves with the property by inspection or otherwise.
4. Reference to any mechanical or electrical equipment does not constitute a representation that such equipment is capable of fulfilling its function and prospective Buyers must make their own enquiries.
5. They have no responsibility for any expenses or costs incurred by prospective Buyers in inspecting properties which have been sold, let or withdrawn. Applicants are advised to contact the Agent to check availability and any other information of particular importance to them, prior to inspecting the property, particularly if traveling some distance.

