



Burdrop
Oxfordshire

Burdrop, Oxfordshire

A Charming Grade II Listed Stone and Thatch Two Double Bedroom Cottage with Additional Attic Room located in the Quiet and Sought After Hamlet of Burdrop.

Situated in picturesque Oxfordshire countryside is the small hamlet, Burdrop. Burdrop is part of the popular village of Sibford Gower and its sister village Sibford Ferris, which are situated on each side of the Sib Valley in attractive rolling north Oxfordshire countryside on the borders of south Warwickshire close to the Cotswolds. The villages have a general store/post office, public house with restaurant, doctor's surgery, and high performing village primary school. More amenities can be found at Hook Norton with the larger centres of Banbury, Chipping Norton, and Shipston-on-Stour not far away. Sibford School is a private nursery/prep and secondary school in the village. Local secondary schools are at the Warriner (Bloxham) and Chipping Norton. Further prep schools at Carrdus (Overthorpe) and Kitebrook (Moreton-in-Marsh). Public schools include Bloxham and Tudor Hall and there are bus services from Banbury to both Warwick and Oxford schools.





The Property Briefly Comprises of:

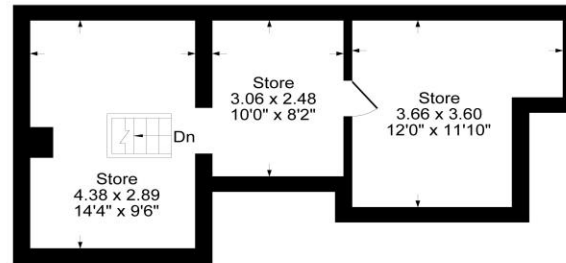
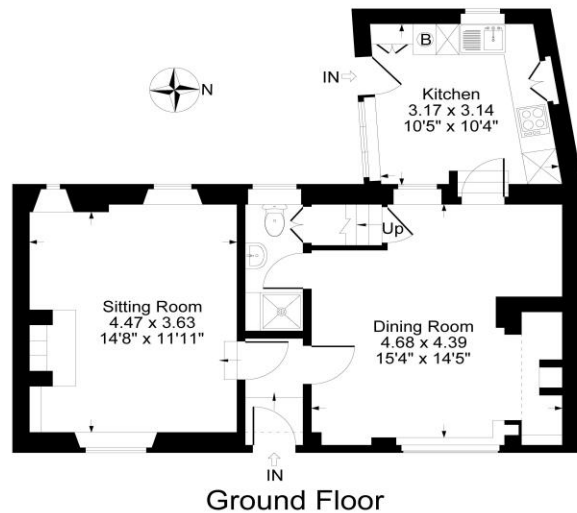
- Grade II Listed
- Two Reception Rooms
- Kitchen/Breakfast Room
- Sitting Room with Log Burning Fire
- Cloakroom/Utility Room
- Two Double Bedrooms
- Fully Boarded Attic Room
- Enclosed Rear Courtyard with Patio Area
- Front Garden
- Oil Central Heating

Guide Price: £480,000

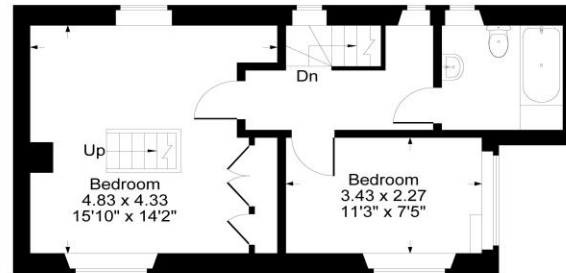


Approximate Gross Internal Area
 Ground Floor = 53.61 sq m / 577 sq ft
 First Floor = 38.26 sq m / 412 sq ft
 Second Floor = 32.92 sq m / 354 sq ft
 Total Area = 124.79 sq m / 1343 sq ft

Illustration for identification purposes only,
 measurements are approximate, not to scale.



Second Floor



First Floor

Local Authority
 Cherwell District Council

Council Tax Band:
 D
 (Subject to change after completion)

Tenure
 Freehold

Distances
 Banbury c. 10 miles
 Bicester c. 20 miles
 Chipping Norton c. 12 miles
 Oxford c. 25 miles
 Banbury to London Marylebone
 approx. 1 hour
 M40 Junction 11 c. 10 miles

Mark David
 ESTATE AGENTS
 Sales • Lettings • Management

Market House, Market Place, Deddington, Oxfordshire
 OX15 0SB
 Tel: 01869 338898
 Email: deddington@mark-david.co.uk
www.mark-david.co.uk

Important Notice

Mark David Estate Agents for themselves and their clients give notice that:-

1. They are not authorised to make or give representation or warranty in relation to this property, either on their own behalf or on behalf of the Seller. They assume no responsibility for any statement made in these particulars. These particulars do not form part of any offer or contract and must not be relied upon as statements or representations of fact.
2. Whilst every attempt has been made to ensure the accuracy of the floorplan contained here, measurements of doors, windows, rooms and any other items are approximate and no responsibility is taken for any error, omission, or mis-statement.
3. All areas, measurements or distances are approximate. The particulars are intended for guidance only and are not necessarily comprehensive. A wide angle lens may have been used in photography. Mark David Estate Agents have not tested appliances or services and it should not be assumed that the property has all necessary planning, building regulation and other consents. Buyers must satisfy themselves with the property by inspection or otherwise.
4. Reference to any mechanical or electrical equipment does not constitute a representation that such equipment is capable of fulfilling its function and prospective Buyers must make their own enquiries.
5. They have no responsibility for any expenses or costs incurred by prospective Buyers in inspecting properties which have been sold, let or withdrawn. Applicants are advised to contact the Agent to check availability and any other information of particular importance to them, prior to inspecting the property, particularly if traveling some distance.

