



Middle Barton
Oxfordshire

Middle Barton, Oxfordshire

A Stunningly Well Thought Out Updated Property with a Real WOW Factor.

Middle Barton is a popular village with easy access to Deddington, Banbury, Bicester, Chipping Norton and Oxford. There is a Village Primary School, Village Stores, Post Office, Lebanese Restaurant, Active Sports and Social Club with a Playground and a Public House. A community bus service, Our Bus Bartons, operates services to Banbury, Oxford and surrounding villages and provides a link to local health centres, supermarkets and railway stations. Open Countryside is just a short stroll away. Soho Farmhouse is located nearby.

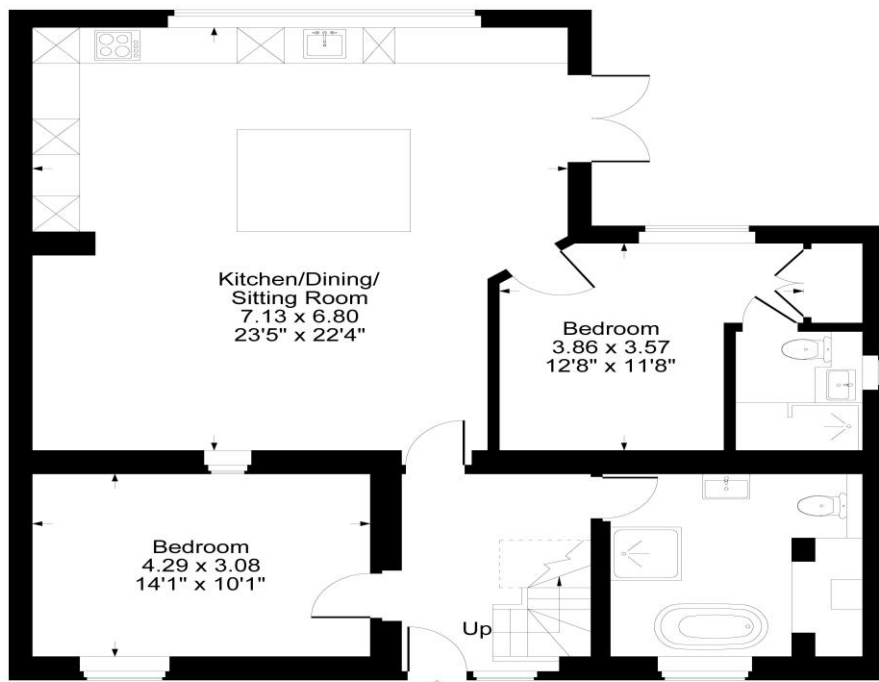




The Property Briefly Comprises of:

- Hallway
- Open plan living/dining/kitchen
- Master bedroom with En-Suite wet room
- Two further bedrooms
- Family bathroom
- Enclosed rear garden
- Off road parking for two vehicles
- Gas Central Heating

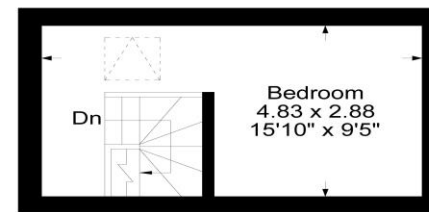
Guide Price: £500,000



Ground Floor

N

Approximate Gross Internal Area
Ground Floor = 98.70 sq m / 1062 sq ft
First Floor = 13.91 sq m / 150 sq ft
Total Area = 112.61 sq m / 1212 sq ft
Illustration for identification purposes only,
measurements are approximate, not to scale.



First Floor

Local Authority
West Oxfordshire District Council

Council Tax Band: C
(Subject to change after completion)

Tenure
Freehold

Distances
Deddington c. 6 miles
Chipping Norton c. 8 miles
Bicester c. 10 miles
Banbury c. 12 miles
Oxford c. 16 miles
London Marylebone via Oxford, c. 1 hour

Mark David
ESTATE AGENTS
Sales • Lettings • Management

Market House, Market Place, Deddington, Oxfordshire
OX15 0SB
Tel: 01869 338898
Email: deddington@mark-david.co.uk
www.mark-david.co.uk



Important Notice
Mark David Estate Agents for themselves and their clients give notice that:-
1. They are not authorised to make or give representation or warranty in relation to this property, either on their own behalf or on behalf of the Seller. They assume no responsibility for any statement made in these particulars. These particulars do not form part of any offer or contract and must not be relied upon as statements or representations of fact.
2. Whilst every attempt has been made to ensure the accuracy of the floorplan contained here, measurements of doors, windows, rooms and any other items are approximate and no responsibility is taken for any error, omission, or mis-statement.
3. All areas, measurements or distances are approximate. The particulars are intended for guidance only and are not necessarily comprehensive. A wide angle lens may have been used in photography. Mark David Estate Agents have not tested appliances or services and it should not be assumed that the property has all necessary planning, building regulation and other consents. Buyers must satisfy themselves with the property by inspection or otherwise.
4. Reference to any mechanical or electrical equipment does not constitute a representation that such equipment is capable of fulfilling its function and prospective Buyers must make their own enquiries.
5. They have no responsibility for any expenses or costs incurred by prospective Buyers in inspecting properties which have been sold, let or withdrawn. Applicants are advised to contact the Agent to check availability and any other information of particular importance to them, prior to inspecting the property, particularly if traveling some distance.