



Aynho  
Oxfordshire

## Aynho, Oxfordshire

---

A generously proportioned detached bungalow set in the middle of a well maintained garden with panoramic views looking over fields from the rear garden.

Aynho is a picturesque village with excellent communication links via Junction 10 of the M40. It has a thriving village community offering lots of clubs and activities including photography, history and a walking group. The Cartwright Hotel has been refurbished and also offers good quality food and accommodation. There is a Village Hall, recreation field and children's playground and many countryside walks can be found on its doorstep. Further comprehensive facilities and mainline stations can be found in nearby Towns of Banbury and Bicester and the City of Oxford.



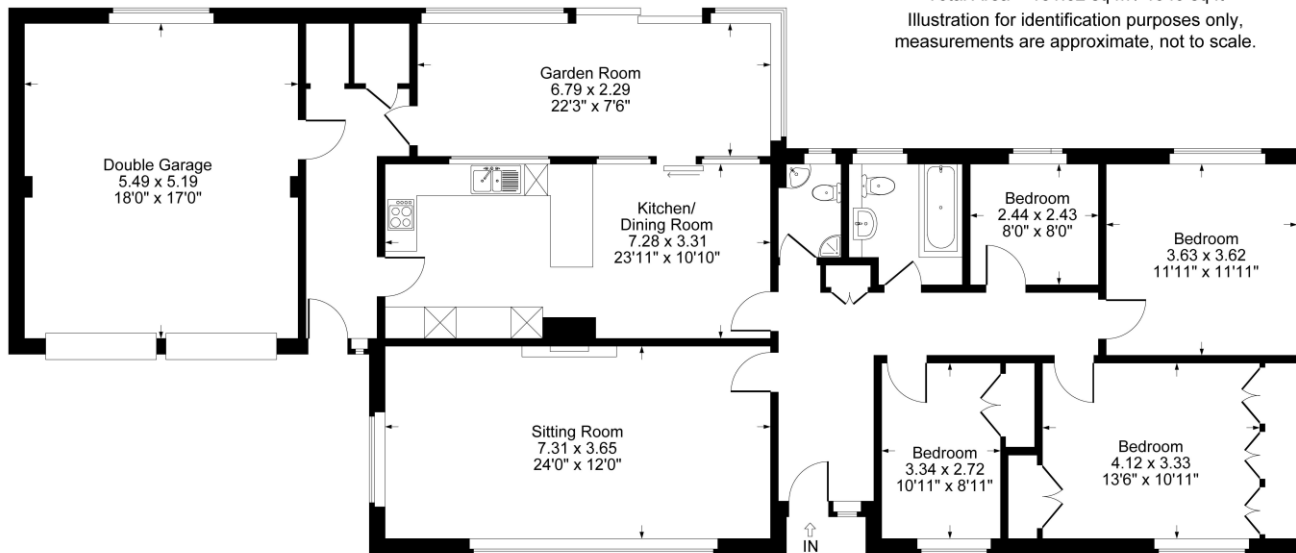


## The Property Briefly Comprises of:

- Entrance Hall
- Kitchen / Diner
- Conservatory
- Shower Room
- Three Bedrooms
- Bedroom Four / Study
- Bathroom
- Double Garage
- Parking for Several Vehicles
- Front and Rear Gardens
- Countryside Views to the Rear



Guide Price: £625,000



Approximate Gross Internal Area  
 Floor = 149.99 sq m / 1615 sq ft  
 Garage = 31.03 sq m / 334 sq ft  
 Total Area = 181.02 sq m / 1949 sq ft  
 Illustration for identification purposes only,  
 measurements are approximate, not to scale.

**Local Authority:**  
 South Northamptonshire

**Council Tax Band: F**

(Subject to change after completion)

**Tenure**  
 Freehold

**Distances**  
 Banbury c. 6 miles  
 Bicester c. 8 miles  
 Oxford c. 22 miles  
 Birmingham c. 58 miles  
 London c. 70 miles  
 M40 Access c. 5 miles  
 London via Bicester c. 43 minutes

**Mark David**  
 ESTATE AGENTS  
 Sales • Lettings • Management

Market House, Market Place, Deddington, Oxfordshire  
 OX15 0SB  
 Tel: 01869 338898  
 Email: deddington@mark-david.co.uk  
 www.mark-david.co.uk

**Important Notice**

Mark David Estate Agents for themselves and their clients give notice that:-  
 1. They are not authorised to make or give representation or warranty in relation to this property, either on their own behalf or on behalf of the Seller. They assume no responsibility for any statement made in these particulars. These particulars do not form part of any offer or contract and must not be relied upon as statements or representations of fact.  
 2. Whilst every attempt has been made to ensure the accuracy of the floorplan contained here, measurements of doors, windows, rooms and any other items are approximate and no responsibility is taken for any error, omission, or mis-statement.  
 3. All areas, measurements or distances are approximate. The particulars are intended for guidance only and are not necessarily comprehensive. A wide angle lens may have been used in photography. Mark David Estate Agents have not tested appliances or services and it should not be assumed that the property has all necessary planning, building regulation and other consents. Buyers must satisfy themselves with the property by inspection or otherwise.  
 4. Reference to any mechanical or electrical equipment does not constitute a representation that such equipment is capable of fulfilling its function and prospective Buyers must make their own enquiries.  
 5. They have no responsibility for any expenses or costs incurred by prospective Buyers in inspecting properties which have been sold, let or withdrawn. Applicants are advised to contact the Agent to check availability and any other information of particular importance to them, prior to inspecting the property, particularly if traveling some distance.

