



Barford St Michael

## Barford St Michael

---

A Detached Three Bedroom House Situated in the Pretty Village of Barford St Michael with a Large, South Facing Rear Garden.

The twin Villages of Barford St John and Barford St Michael are opposite one another across the shallow valley of the River Swere with Barford St John being the smaller of the two villages. The village of Barford St Michael has a community feel about it, it has a thriving village hall with various activities taking place throughout the year. Each month there is the Village Market selling local produce which brings the community together. It also boasts a village store and post office. The nearby villages of Deddington and Bloxham also offer a good range of facilities.



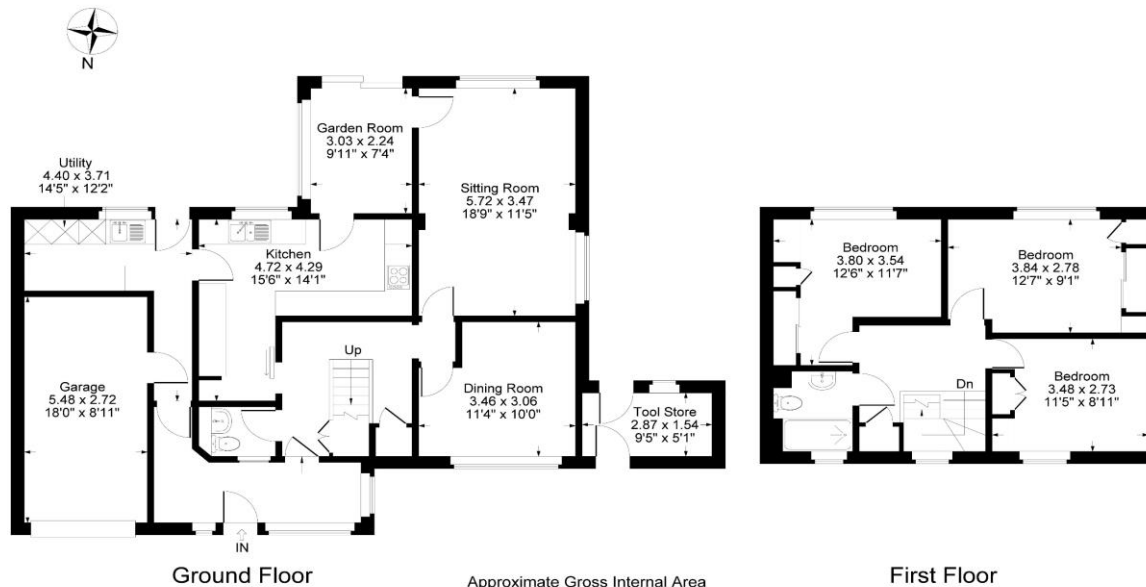


## The Property Briefly Comprises of:

- Three Bedrooms
- Sun Room
- Bathroom
- Cloakroom
- Large South Facing Garden
- Mature Trees
- Garage
- Wooden Garden Shed
- Brick Garden Shed
- Brick BBQ
- Patio
- Spacious



Guide Price: £500,000



Approximate Gross Internal Area  
 Ground Floor = 89.27 sq m / 961 sq ft  
 First Floor = 46.72 sq m / 503 sq ft  
 Garage = 14.90 sq m / 160 sq ft  
 Total Area = 150.89 sq m / 1624 sq ft  
 Illustration for identification purposes only,  
 measurements are approximate, not to scale.

**Local Authority**  
 Cherwell District Council

**Council Tax Band:**  
**D**  
 (Subject to change after completion)

**Tenure**  
 Freehold

**Distances**  
 Banbury c. 6 miles  
 Chipping Norton c. 9 miles  
 Oxford c. 21 miles  
 Birmingham c. 58 miles  
 London c. 76 miles  
 M40 Junction 11 c. 8 miles  
 Banbury to London Marylebone, c. 1 hour

**Mark David**  
 ESTATE AGENTS  
 Sales • Lettings • Management

Market House, Market Square, Deddington, Oxfordshire  
 OX15 0SB  
 Tel: 01869 338898  
 Email: deddington@mark-david.co.uk  
[www.mark-david.co.uk](http://www.mark-david.co.uk)

**Important Notice**

Mark David Estate Agents for themselves and their clients give notice that:-  
 1. They are not authorised to make or give representation or warranty in relation to this property, either on their own behalf or on behalf of the Seller. They assume no responsibility for any statement made in these particulars. These particulars do not form part of any offer or contract and must not be relied upon as statements or representations of fact.  
 2. Whilst every attempt has been made to ensure the accuracy of the floorplan contained here, measurements of doors, windows, rooms and any other items are approximate and no responsibility is taken for any error, omission, or mis-statement.  
 3. All areas, measurements or distances are approximate. The particulars are intended for guidance only and are not necessarily comprehensive. A wide angle lens may have been used in photography. Mark David Estate Agents have not tested appliances or services and it should not be assumed that the property has all necessary planning, building regulation and other consents. Buyers must satisfy themselves with the property by inspection or otherwise.  
 4. Reference to any mechanical or electrical equipment does not constitute a representation that such equipment is capable of fulfilling its function and prospective Buyers must make their own enquiries.  
 5. They have no responsibility for any expenses or costs incurred by prospective Buyers in inspecting properties which have been sold, let or withdrawn. Applicants are advised to contact the Agent to check availability and any other information of particular importance to them, prior to inspecting the property, particularly if traveling some distance.

