



Somerton

Somerton

A Deceptively Spacious and Extended Four Bedroom Detached Stone Residence with Double Garage and Private and Secluded Gardens which Surround the Property.

Somerton village offers a rare mix of countryside seclusion and easy access to all amenities, sitting amidst the wonderful rolling countryside of the Cherwell valley. Within a short drive are rail and road links to London M40, Oxford via Kidlington A4260 and Banbury. The local historic village of Deddington offers various food shops, pubs, a library, health centre, and a primary school and a monthly Farmers market. The village of Somerton itself dates back to Saxon times plus it is mentioned in the Domesday Book, and the Church of St James dates back in part to at least 1074. There are many local activities, a number of which revolve around a fine village hall, rebuilt with lottery money in 2008. This features everything from Films, Quilters, SWIG (Somerton Women's Independent Group), Keep Fit, Evening talks and a Thursday evening bar (which we are told is very popular!).





The Property Briefly Comprises of:

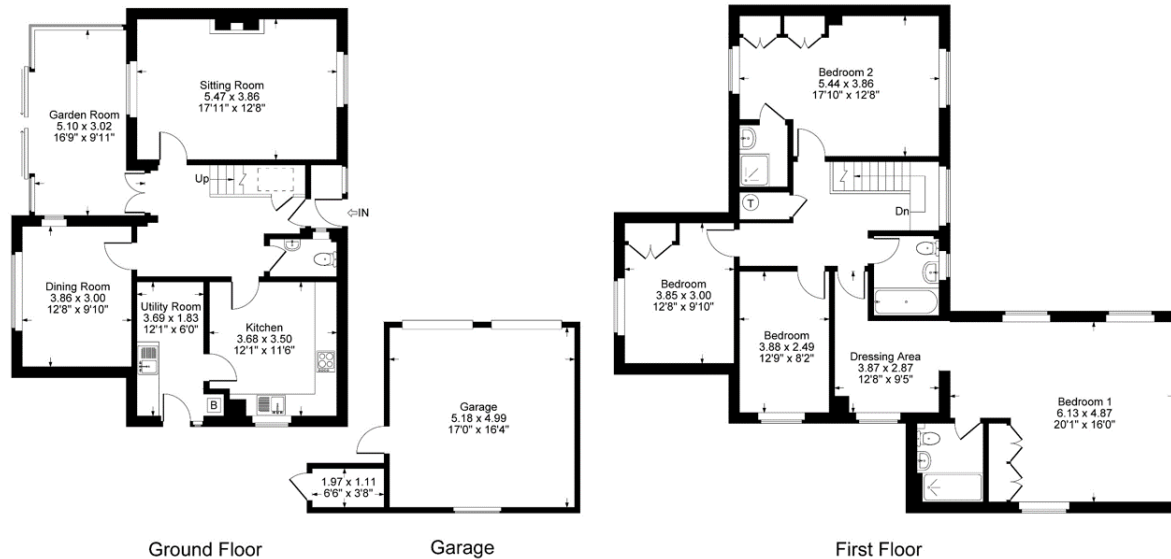
- Entrance Porch
- Spacious Entrance Hall
- Cloakroom
- Sitting Room
- Dining Room
- Conservatory
- Kitchen/Breakfast Room
- Utility Room
- Guest Bedroom
- En-Suite Shower Room
- Master Bedroom
- En-Suite Shower Room
- Dressing Area
- Two Further Double Bedrooms
- Family Bathroom
- Double Width Driveway with Parking for Several Vehicles
- Double Garage
- Gardens to Rear and Side of Property



Guide Price: £600,000



Approximate Gross Internal Area = 193.16 sq m / 2079 sq ft
 Garage = 27.41 sq m / 295 sq ft
 Total Area = 220.57 sq m / 2374 sq ft
 Illustration for identification purposes only,
 measurements are approximate, not to scale.



Local Authority
 Cherwell District Council

Council Tax Band:
 F
 (Subject to change after completion)

Tenure
 Freehold

Distances
 Deddington c. 4 miles
 Bicester c. 8 miles
 Banbury c. 10 miles
 Chipping Norton c. 14 miles
 Oxford c. 17 miles
 Stratford Upon Avon c. 39 miles
 Birmingham c. 64 miles
 London c. 70 miles
 M40 Access c. 4 miles
 London via Bicester c. 43 minutes
 Oxford to London Paddington c. 1 hour

Photographs were taken in December 2022
 for Marketing Purposes

Mark David
 ESTATE AGENTS
 Sales • Lettings • Management

Market House, Market Square, Deddington, Oxfordshire
 OX15 0SB
 Tel: 01869 338898
 Email: deddington@mark-david.co.uk
 www.mark-david.co.uk

Important Notice

Mark David Estate Agents for themselves and their clients give notice that:-

1. They are not authorised to make or give representation or warranty in relation to this property, either on their own behalf or on behalf of the Seller. They assume no responsibility for any statement made in these particulars. These particulars do not form part of any offer or contract and must not be relied upon as statements or representations of fact.
2. Whilst every attempt has been made to ensure the accuracy of the floorplan contained here, measurements of doors, windows, rooms and any other items are approximate and no responsibility is taken for any error, omission, or mis-statement.
3. All areas, measurements or distances are approximate. The particulars are intended for guidance only and are not necessarily comprehensive. A wide angle lens may have been used in photography. Mark David Estate Agents have not tested appliances or services and it should not be assumed that the property has all necessary planning, building regulation and other consents. Buyers must satisfy themselves with the property by inspection or otherwise.
4. Reference to any mechanical or electrical equipment does not constitute a representation that such equipment is capable of fulfilling its function and prospective Buyers must make their own enquiries.
5. They have no responsibility for any expenses or costs incurred by prospective Buyers in inspecting properties which have been sold, let or withdrawn. Applicants are advised to contact the Agent to check availability and any other information of particular importance to them, prior to inspecting the property, particularly if traveling some distance.

